

Scottish Marine Environmental Enhancement Fund

Supporting impactful projects through strategic investment



Enabling investment in tangible, effective marine and coastal restoration projects in Scotland

A unique fund

- SMEEF is an opportunity for anyone who uses the sea for business or leisure to voluntarily reinvest in the health of our oceans.
- Our grants aim to support restoration and enhancement of marine and coastal biodiversity and help tackle climate change.

www.smeef.scot



Marine Ecosystem Services

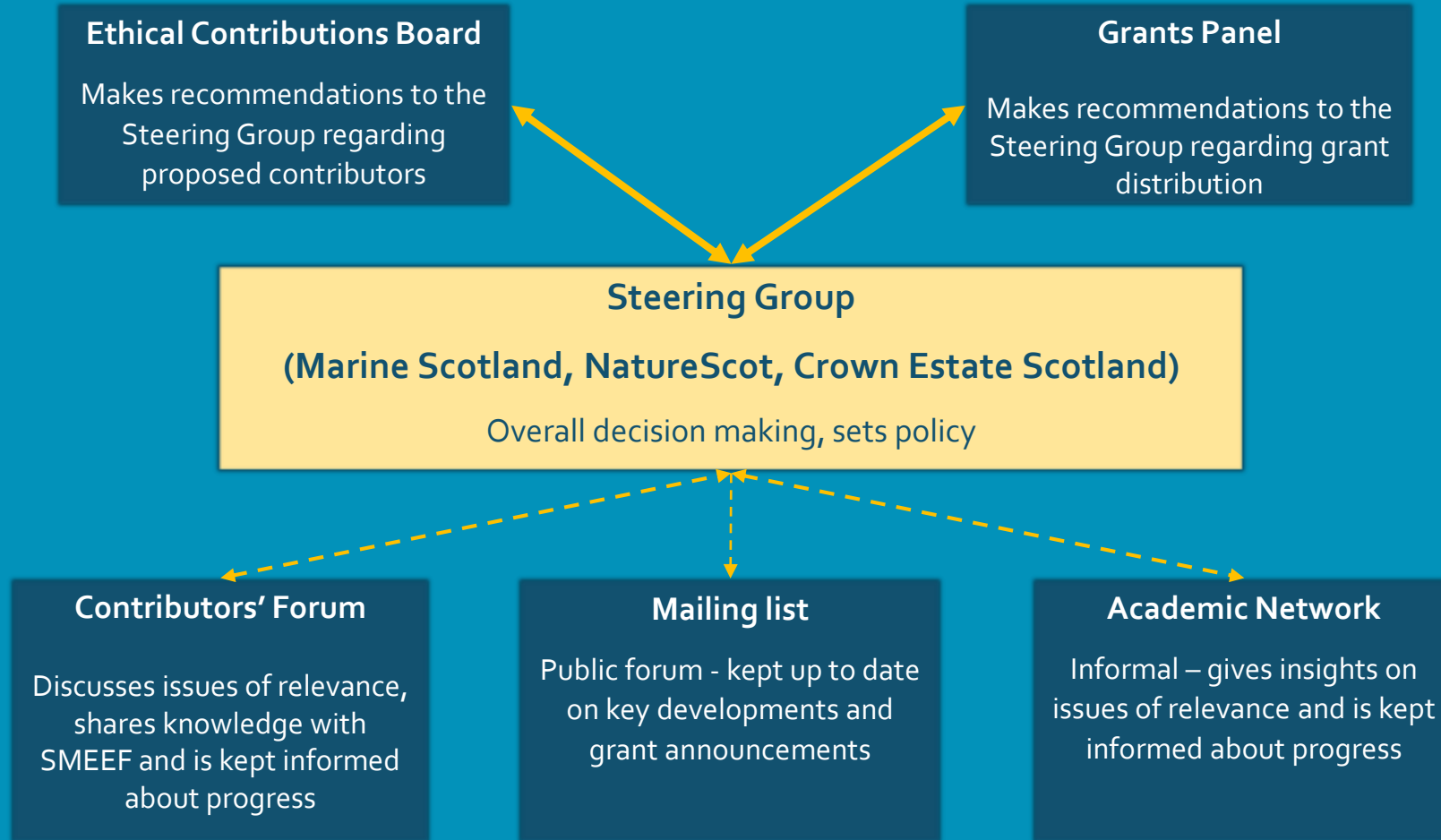
What is SMEEF?

Our ambition is to run a long term, substantial grant fund to support meaningful restoration of Scottish coasts and seas.

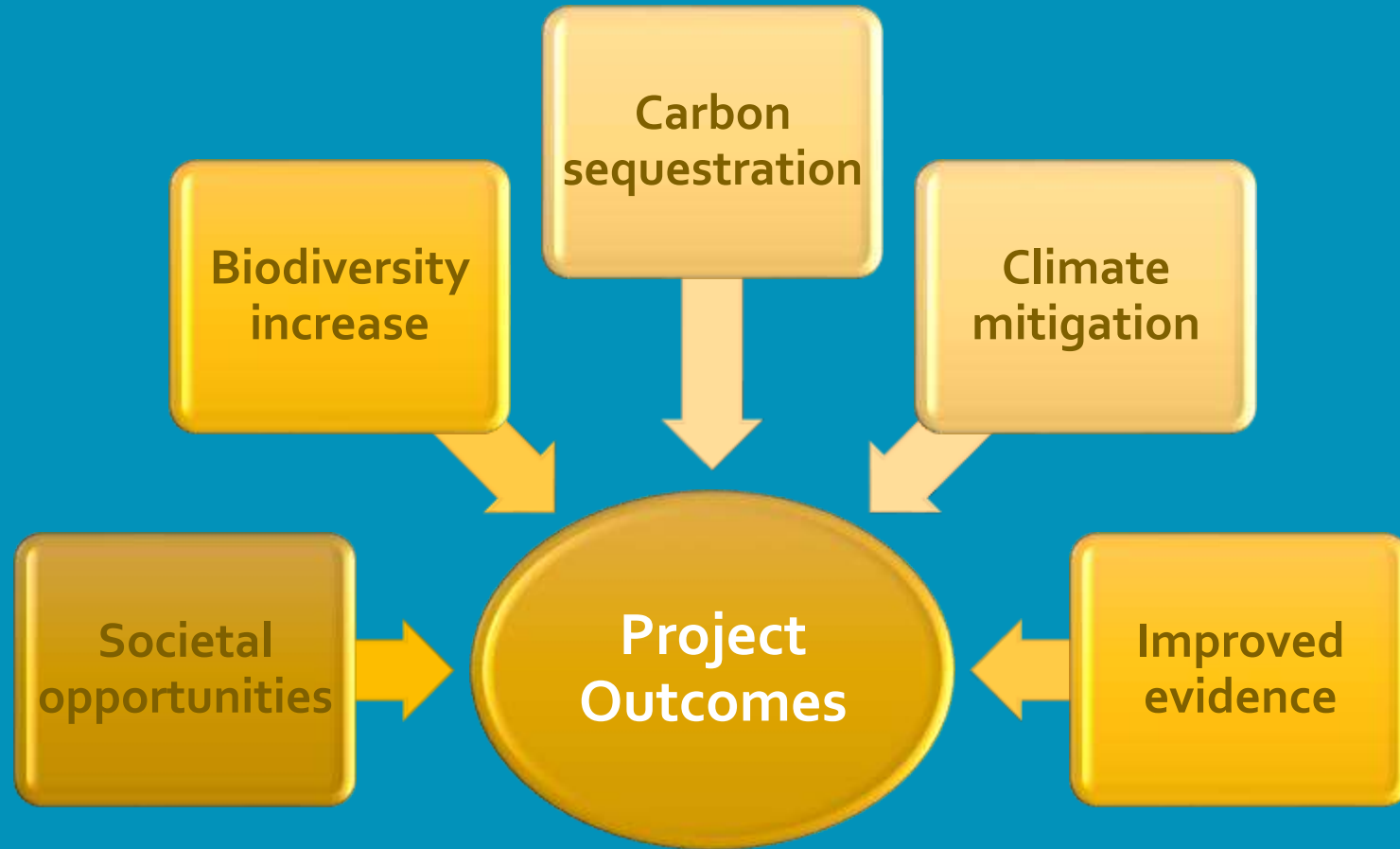
SMEEF was founded by a partnership of Scottish Government Marine Scotland Directorate, Crown Estate Scotland and NatureScot, our unique structure ensures credibility and transparency.



SMEEF Decision Making Structure



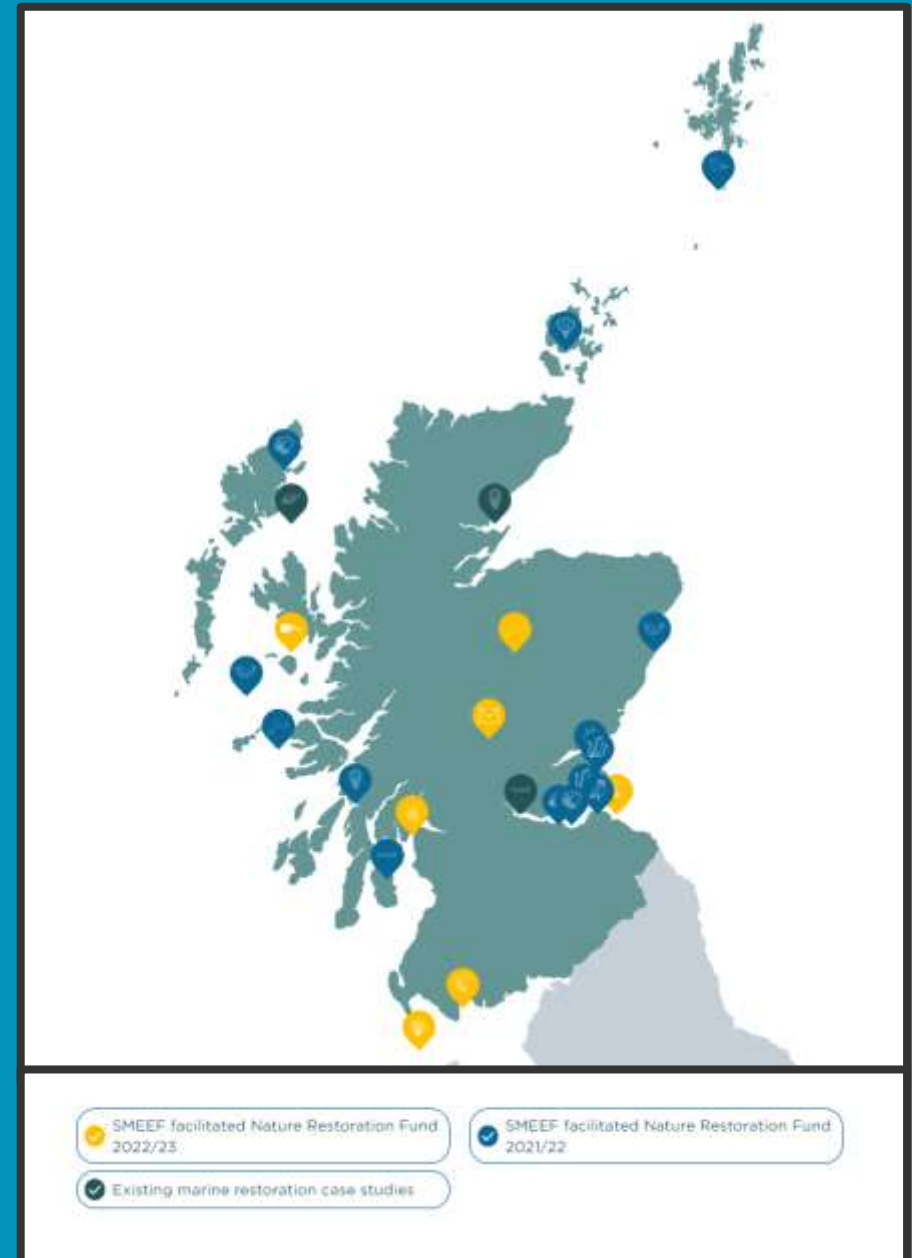
SMEEF funds impactful projects focused on the following areas:



Strategic Investment

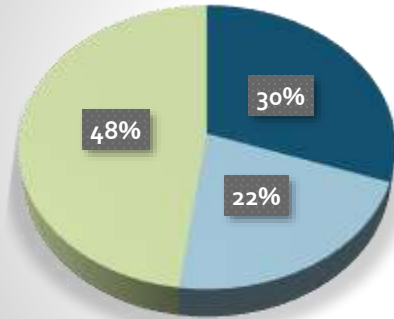
- Main habitat types benefiting from grants to date
 - Saltmarsh
 - Seagrass
 - Sand dunes
 - Native oyster
- Main project types benefiting from grants to date
 - Population restoration/enhancement
 - Feasibility/baseline survey
 - Strategic capital projects
 - Invasive species removal

Contributors do not have any influence on how SMEEF grants are allocated.



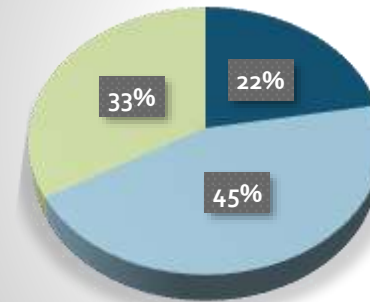
Spending to date (circa £3.2m)

Number of Grants –2021/22



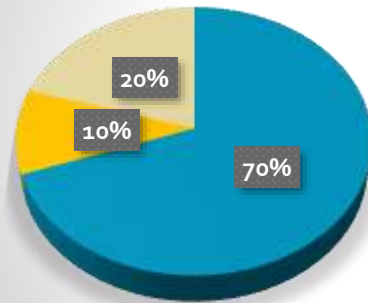
- Strategic Support - funding of benefit to a range groups/areas/issues
- Research including data collection and baseline survey
- Hands on physical restoration, recovery or enhancement work

Number of Grants - 2022/23



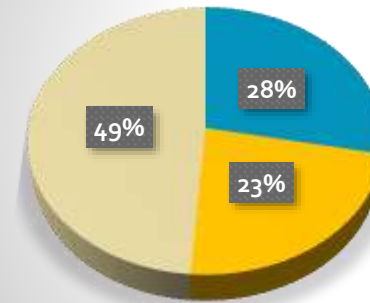
- Strategic Support - funding of benefit to a range groups/areas/issues
- Research including data collection and baseline survey
- Hands on physical restoration, recovery or enhancement work

Value of Grants - 2021/22



- Strategic Support - funding of benefit to a range groups/areas/issues
- Research including data collection and baseline survey
- Hands on physical restoration, recovery or enhancement work

Value of Grants - 2022/23



- Strategic Support - funding of benefit to a range groups/areas/issues
- Research including data collection and baseline survey
- Hands on physical restoration, recovery or enhancement work

Examples of restoration

- Habitat improvements, for example, relating to sand dunes, seagrass, saltmarsh and native oyster beds.
- Measures to restore, recover or enhance mobile species, for example relating to marine birds or cetaceans.
- Invasive species eradication.
- Other activities, including citizen science, which help to improve our understanding of human pressures on the marine environment, particularly if this is part of a practical restoration project.

Projects should always:

- Be as collaborative as possible and have a clear engagement plan for involving interested groups,
- Demonstrate clear additionality to existing and already committed actions,
- Be informed by science; driven by knowledge and backed up by monitoring.

Next Grant Round – Project Development

- Our first privately financed funding round is open from 17.11.22-09.01.23
- Practical restoration project development, including:
 - baseline surveys,
 - feasibility studies,
 - assessment of management actions.
- Grants of £10,000-25,000.
- Exceptional award(s) of up to £100,000.
- There is no maximum or minimum physical size of project.

General conditions

- We will not normally fund the same project twice. However we can fund a new phase of an ongoing or existing project.
- We cannot pay for activities that have already started.
- The applicant(s) must be based in the UK and all projects must be delivered in Scotland.
- Projects should focus on the marine and coastal environment. The habitats and species at the heart of the project should be reliant on the marine environment as a major part of their nutrient or life cycle.

Please note – All outputs must be open access, have a robust methodology and be reviewed by relevant experts.

What can we pay for?

- ✓ Staff costs inclusive of salary, National Insurance and Employee Pension Contributions.
 - ✓ Professional fees that are appropriate and proportionate to the project.
 - ✓ Project staff travel and subsistence to cover staff and any volunteers supporting delivery of the project activities.
 - ✓ Project evaluation – additional costs for measuring success and evaluating the project.
 - ✓ Equipment and resources to deliver the project (please remember this is primarily a research fund focused on baseline survey and feasibility. Equipment costs **not** should be the dominate feature of your budget).
 - ✓ Dissemination of the project outcomes.
 - ✓ Irrecoverable VAT.
-
- ✗ SMEEF is unable to fund statutory functions.
 - ✗ The main applicant cannot be a 'for profit' company, however it could be a minority interest of a consortium bid.
 - ✗ The project can include financial returns or cost recovery through a financial mechanism, but the main aim of the project must be biodiversity/ecosystem gains, not profit.
 - ✗ SMEEF will not fund political activity or campaigns.
 - ✗ Creation or repairing of tracks for access to sites will not normally be funded.

Recap

- In general the minimum grant is £10,000 although we are willing to discuss lower levels if that is what your project needs.
- The maximum amount is generally £25,000.
- We will hope to fund one exceptional award of up to £100,000. If you feel your project would be suitable, please speak to us before submitting your application.
- The number of awards we are able to make will vary depending on the amount we have available in the grant pot.
- To help ensure SMEEF is as effective as possible, applicants are encouraged to work in partnership and we welcome evidence of match funding.
- A maximum of 100% funding is usually available for applications.

NB – if you do get a grant PLEASE ACKNOWLEDGE IT where you can!

Dates

- Open – 17/11/22
- Deadline for applications – 09/01/23 at 1700hrs
- Grants Panel will meet in January 2023
- Grant offers will be made in February 2023
- Projects begin April 2023

Questions?



More information on the website –
www.smeef.scot

Contact, grants@smeef.scot